

**LEGEND**  
Underground Utilities

WM Water Main	Gas
FW Fire Water	Hydgn Hydrogen Pipe
PSW Process Water	Oil Oil Pipe
SW Storm Water Drainage	Mag Magnet
FS Foul Sewer	Ad Adshel
CS Combined Sewer	Trf Traffic
Manhole Chamber	Heat Heating Pipe
Er Eircom	Elec Electrical
Vir NTL/Virgin	PL Public Lighting
ENET/OCEAN	GPR Anomaly
BT/BT/ESAT	Unk Cbl Unknown Cable Duct
Colt	ED Unknown Empty Duct
Aurora	Nitrogen Nitrogen Pipe
Bend / Weld	Unk Serv Unidentified Service
Oxy Oxygen Pipe	URS Unidentified Radio Signal
WELD Weld Point	UPS Unidentified Power Signal
	Photo point

Reinforced Concrete (GPR)    Possible Slab (GPR)  
 Other observations - see description (GPR)  
 DP0.55 Depth from ground level to    UTO Unable to Open  
 Top of Pipe/GPR Target (m)    NPV No pipes visible  
 WL Water Level  
 Ø150 PE Pipe/Duct diameter (mm) and material  
 S/L Signal Lost    UTT Unable to trace    FO Fibre Optic  
 T/L Trace Lost    UTS Unable to sonde    Ujk Unknown  
 N/S No Signal    Bld Blocked    Ab Abandoned  
 Exp Exposed    CD Closed Duct    (AS) Assumed  
 O/S Off-site  
 (Records) Utility taken from records    Pass./Prob. Possible/Probable  
 CC Concrete    CI Cast Iron    AC Asbestos Concrete  
 VC Vitrified Clay    DI Ductile IronPE Polyethylene  
 BR Brick    ST Steel  
 S1 Survey Station

**LEGEND**

- MONKSLAND AGI BOUNDARY
- PROPOSED Ø200 GAS PIPELINE
- EXISTING GAS PIPELINE

**NOTES:**

- ALL CO-ORDINATES RELATE TO IRISH TRANSVERSE MERCATOR (ITM) UNLESS OTHERWISE STATED.
- CO-ORDINATES REFER TO THE CENTRE POINT OF EACH TIE-IN LOCATION.

**HAZARD**

01	Buried electrical cable running in parallel
02	Overhead electrical cable running in parallel
03	Existing gas pipe

**Engineering Constraint**

01	Area with high density of underground services
02	Railway crossing
03	Motorway crossing

**Environmental Consideration**

01	Storm water drainage (Potential pathway to river)
02	River
03	Ditch
04	Japanese Knotweed
05	Tree
06	Otter Corridor

**SETTING OUT CO-ORDINATES**

ID	EASTING	NORTHING
'TP1'	600675.652	738589.126
'TP2'	600452.809	740623.923

**SECTION 39A APPLICATION**

REV.	DATE	REVISION	BY	CHKD.	APPR.
A	23/08/24	SECTION 39A APPLICATION	DJM	TM	CS

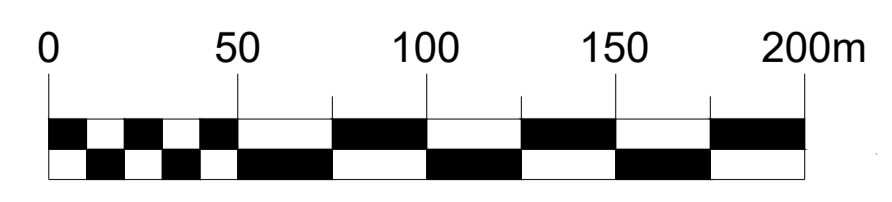
Client

Gas Networks Ireland  
Gasworks Road, Cork, Ireland  
PH: (+353) 21 453 4000

Bridge Street Centre  
Portlaoise  
Co. Laois  
R32 W0CC  
Ireland  
T:00353(0)57 866 5400  
www.fingleton.ie

Project

**Gas to Greener Ideas**  
PIPELINE CONSTRAINTS MAP



Drawn D.MAILEY	Scale 1:2000/A1	Drawing Number	Rev.
Chkd T.MALONE	Date 23/08/24	1379-01-DG-0010	A
Apprd C.SMITH	Status SECTION 39A	sheet 2 of 2	